



Canadians for Justice and Peace
in the Middle East



Module 1: Humanitarian Situation in Occupied Palestinian Territory

June, 2007



© CJPME, 2006



General View of the Situation

- Political, Economic and Social Conditions. Since the beginning of 2006, political, economic and social conditions have sharply deteriorated in the occupied Palestinian territory (oPt)
- Poverty and food dependence. Ordinary Palestinians have been the main victims of this crisis. Poverty rates stand at 65.8% and continue to rise; food insecurity has risen by 13% during 2006
- Failure in Public Services. A wave of public sector strikes, which swept across oPt in September 2006, has severely debilitated the delivery of public services, leading to the closure of public schools and hospital wards in the West Bank



Main Factors of the Humanitarian Crisis

According to OCHA, three factors have contributed to a worsening of the humanitarian situation in oPt:

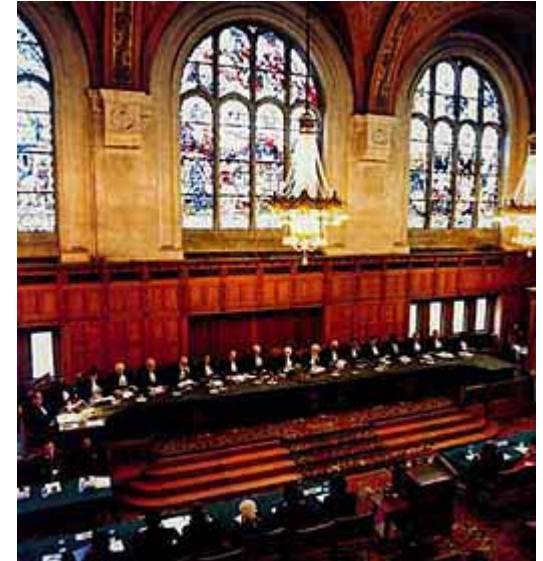
1. Lack of protection of civilians and increasing violence
2. Increased restrictions on movement
3. Financial and institutional crisis of the PA following election of Hamas



Legal Protection of Civilians

The civilian population and individual civilians shall enjoy general protection against dangers arising from military operations...The civilian population as such, as well as individual civilians, shall not be the object of attacks.

Fourth Geneva Conventions
Article 51



Lack of Protection of Civilians

- 678 Palestinians killed in direct conflict in 2006 (215 in 2005)
- 3194 Palestinians injured in direct conflict in 2006 (1262 in 2005)
- 101 Ave weekly detentions in 2006 (74 in 2005)
- 127 Palestinian children killed in 2006 (33 in 2005)
- 381 Palestinian children held in Israeli detention
- 183 Residential homes demolished in WB and Gaza in 2006



Stats on Casualties in Conflict

	Total 2005 (monthly average)	Total 2006 (monthly average)	May- 06	Jun- 06	Jul- 06	Aug- 06	Sep- 06	Oct- 06	Nov- 06	Dec- 06	Jan- 07	Feb - 07	Mar- 07	Apr- 07
Number of Palestinian deaths - direct conflict¹														
West Bank	215 (18)	678 (57)	21	4	17	16	7	12	17	12	8	11	7	9
Gaza Strip			17	35	164	61	24	48	121	3	3	2	2	10
Israel			0	2	0	0	0	1	0	0	1	0	0	0
Number of Israeli deaths - direct conflict														
oPt	48 (4)	25 (2)	0	1	3	1	1	0	1	0	0	1	0	0
Israel			1	2	0	0	0	0	2	0	3	0	0	0

Stats on Deaths among Children

	Total 2005 (monthly average)	Total 2006 (monthly average)	May-06	Jun-06	Jul-06	Aug-06	Sep-06	Oct-06	Nov-06	Dec-06	Jan-07	Feb-07	Mar-07	Apr-07
Number of Palestinian children killed - direct conflict⁴														
West Bank	33 (3)	127 (11)	0	0	4	1	1	1	5	2	3	0	1	1
Gaza Strip			1	5	38	12	9	5	23	1	1	1	0	2
Number of Israeli children killed - direct conflict⁶														
oPt	3 (<1)	1 (<1)	0	0	0	0	0	0	0	0	0	0	0	0
Israel	2 (<1)	0	0	0	0	0	0	0	0	0	0	0	0	0

Impact of Increased restrictions on Movement of Palestinians

The closure system is a primary cause of the humanitarian crisis in the West Bank and the Gaza Strip. It restricts Palestinian access not only to basic services such as health and education, but divides communities from their land and one another, places of work and sites of religious worship.

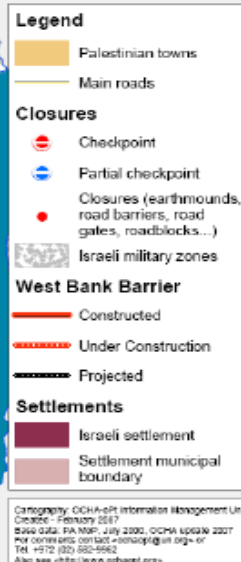
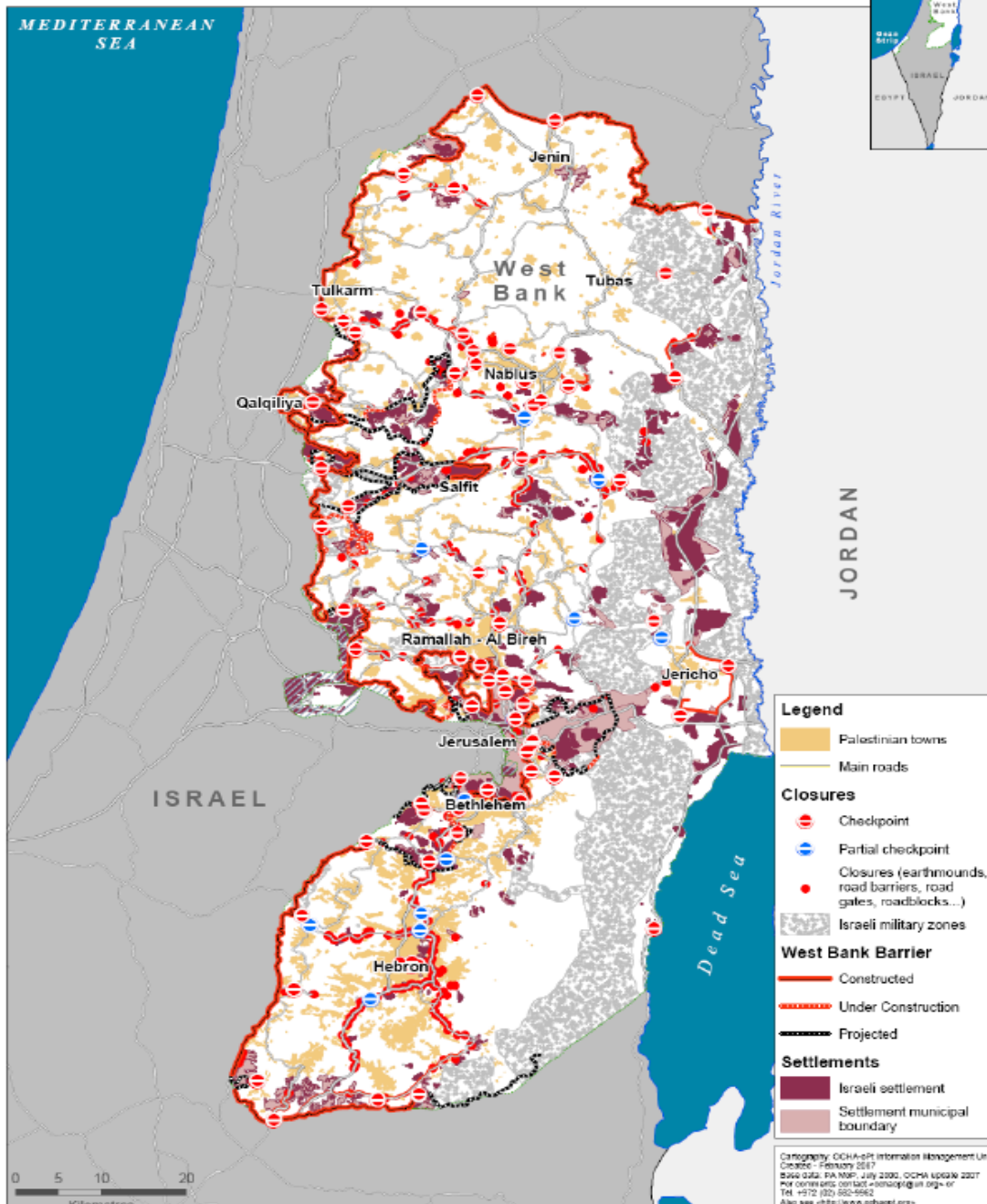
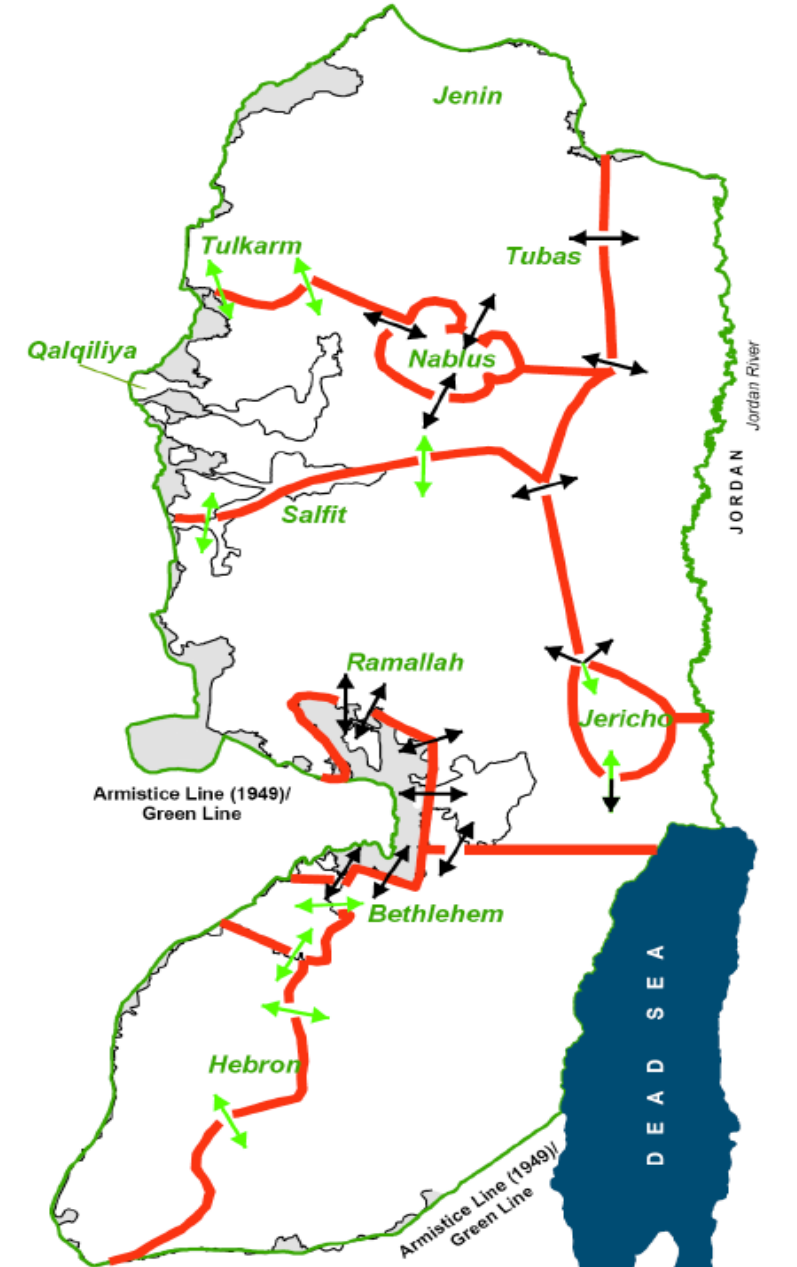
OCHA, September 2006

Types of Restrictions on Movement

Palestinians are barred from freely accessing large segments of the West Bank. Restricted areas include:

- Municipal boundaries of settlements
- “Seam zone”
- Much of the Jordan Valley
- East Jerusalem
- Restricted roads and other ‘closed’ areas





Physical and Administrative Impediments

- Physical Impediments: between November 2005 and November 2006, physical impediments in the WB increased by 44%. In March 2007, OCHA reported impediments were slightly higher (546)
- Administrative Restrictions: orders, which are published and have effect of law; then supplemented by *ad hoc* measures which are communicated verbally to Palestinians, but not supported by published rules

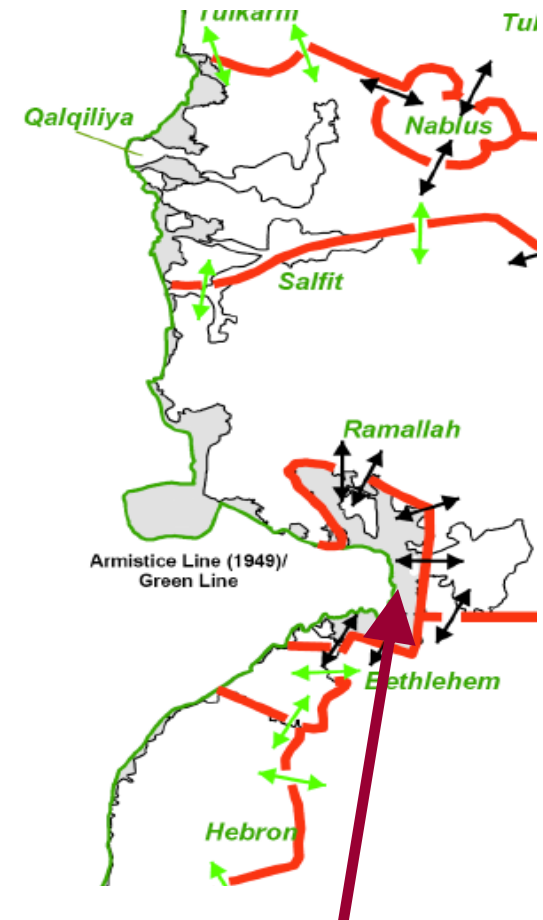
The impact of illegal Israeli colonies on Movement

- System of “settler only” roads ensures settlers can travel with ease; meanwhile Palestinians forced to an inferior set of roadways
- Incidents of settler violence against Palestinians have been well-documented yet adequate steps to remedy the situation have not been taken
- Beyond physical attacks on persons, there have been acts of vandalism by settlers resulting in damage to crops, killing of livestock and poisoning of water wells



The Impact of the “Seam Zone” on Palestinian Movement

- 50,000 Palestinians in 38 villages and towns living in “the seam zone”
- Another 61,000 Palestinians, residents of East Jerusalem will be separated by the barrier from family and community networks, and employment opportunities
- Approximately half a million Palestinians live within 1 km of the Wall on its eastern side, and many of these people have been negatively affected
- Palestinian residents of the “seam zone” are required to apply for a “permanent resident ID” from the Civil Administration in order to remain in their homes
- Palestinians entering or residing in the “seam zone” without a permit can face a five-year prison sentence or heavy fine. Israeli citizens, residents and settlers are exempted from the regulations prohibiting access and construction



Seam Zone: All areas between the Apartheid Wall and the Green Line (in Gray)

The Impact of the Apartheid Wall on Palestinian Movement

Effects of Separation Wall on Palestinian residents in the northern West Bank:

- Social Impacts: 60% of families no longer could access “seam zone” because they were not provided permits
- Land Access: 22% of land became accessible only by foot, thus no vehicles could be used to transport produce grown there
- Gate Access: Only 26 of 61 gates located in the Barrier were open year-round and only 64% of the gates operated in accordance with officially-stated opening times
- Impacts on Livelihoods: Damage or refusal of entry of agricultural produce was experienced by 24% of respondents



The key to Palestinian economic and social recovery...

Only through a fundamental reassessment of closure, and a restoration of the presumption of movement, as embodied in the many agreements between GOI and the PA, will the Palestinian private sector be able to recover and fuel sustainable growth.



World Bank Technical Team
May 9, 2007

Source of the financial crisis of the PA, since March, 2006

International Revenue Streams received by the Palestinian Authority

- The PA has three sources of funding:
 - Clearance revenues transferred from Israel, estimated at \$65 M (US) per month (Note: these revenues were established through the quasi-customs union between Israel and Palestine set up via the Oslo Accords)
 - Budget support from the international community, estimated at \$34 M per month,
 - Domestic revenues, estimated at \$35 M per month.

Each month PA requires (of which 60% is salaries to PA)	\$165 million
In 2005 the PA received:	
VAT and customs	\$60 million
Average donor payments	\$30 million
Internal other taxes	\$30 million
Note: The deficit of \$45 million was in part due to the increase of PA salaries announced in 2005.	

Changes to the PA Revenue Picture

- Since January, Israel has withheld the clearance revenues legally owed to the PA
- Since January, 2006, Israel has imposed harsh trade restrictions on the Palestinian territories (“trade and labour restrictions” in World Bank terminology)
- At end of March, Western aid donors declared a cessation of aid payments to the PA



Financial Crisis: World Bank 2006 Predictions

Scenario 1: No Abrupt Change in revenue streams

Scenario 2: Suspension of Clearance Revenue Transfers, Trade and Labor Restrictions (Israel acts alone to pressure the PA)

Scenario 3: Gradual Cutting off of Aid Flows (Western donors pressure the PA)

Scenario 4: Suspension of Clearance Revenue Transfers, Trade and Labor Restrictions, and Reduced Aid Flows (Both Israel and Western donors pressure the PA)

Assumptions	2005 (est.)	Scenario 1			Scenario 2			Scenario 3			Scenario 4		
		2006	2007	2008	2006	2007	2008	2006	2007	2008	2006	2007	2008
Revenues transferred	740	790	783	778	100	0	0	704	696	689	100	0	0
Revenues withheld	0	0	0	0	489	568	573	0	0	0	422	503	507
Palestinian workers in ISI	44,800	32,800	20,100	7,400	22,700	13,400	7,400	32,800	20,100	7,400	22,700	13,400	7,400
Foreign assistance	1,300	1,300	1,200	1,100	1,300	1,200	1,100	1,100	1,000	900	1,100	1,000	900
Public consumption	1,514	1,551	1,567	1,583	1,243	1,243	1,243	1,514	1,514	1,514	1,071	1,071	1,071
Exports	590	647	681	723	500	540	576	655	690	732	506	547	585
Population (million)	3.51	3.63	3.76	3.88	3.63	3.76	3.88	3.63	3.76	3.88	3.63	3.76	3.88
Inflation (cpi, %)	3.5	2	2	2	2	2	2	2	2	2	2	2	2
Outcomes													
GDP	4,044	4,296	4,272	4,264	3,192	3,110	3,132	4,038	4,006	3,983	2,910	2,835	2,851
GDI	5,815	5,983	5,766	5,560	4,799	4,549	4,429	5,550	5,316	5,085	4,353	4,096	3,959
Private consumption	3,652	3,829	3,837	3,856	3,044	2,947	2,950	3,708	3,721	3,754	2,953	2,792	2,777
Investment	1,022	1,161	1,044	927	588	480	467	861	742	604	405	369	362
Imports	2,734	2,892	2,857	2,824	2,183	2,100	2,104	2,700	2,660	2,622	2,026	1,945	1,944
GDP per capita	1,152	1,183	1,136	1,099	879	827	807	1112	1066	1026	802	754	735
GDI per capita	1,657	1,648	1,533	1,433	1,322	1,210	1,141	1,529	1,414	1,310	1,199	1,089	1,020
Real GDP growth	6.3	4.9	-2.3	-1.7	-18.5	-4.3	-0.8	-0.2	-2.6	-2.1	-24.5	-4.3	-1.0
Real GDP p.c. growth (%)	2.7	1.3	-5.5	-4.9	-21.3	-7.4	-4.0	-3.6	-5.8	-5.3	-27.1	-7.4	-4.2
Real GDI p.c. growth (%)	4.3	-2.6	-8.6	-8.5	-21.9	-10.1	-7.7	-10.2	-9.2	-9.3	-30.0	-10.8	-8.3
Cumulative real GDP p.c. change since 1999	-30.6	-29.7	-33.6	-36.8	-45.4	-49.5	-51.5	-33.1	-37.0	-40.3	-49.4	-53.2	-55.1
Unemployment (%)	23.4	22.4	28.7	34.1	35.5	41.4	44.9	24.2	29.7	34.8	39.6	44.3	47.0
Poverty (%)	44	43	48	51	62	67	70	47	51	55	67	72	74

Source: West Bank and Gaza, Economic Update and Potential Outlook, World Bank, March 15, 2006

OCHA 2006 Predictions of Impacts of Financial Pressures on the PA

Assumptions	Scenario 1 – Current crisis and no abrupt change in PA funding	Scenario 2 – Current crisis plus limited erratic PA funding	Scenario 3 – Current crisis and no funds available for the PA
Aid to the PA	<ul style="list-style-type: none"> PA receives aid as in 2005 (approx. \$360ml) 	<ul style="list-style-type: none"> The PA receives limited funding (approx. \$230m) from Arab countries and most Western funding is withdrawn² Western donors identify alternative financing mechanisms separate from the PA.³ Donor contributions are delayed by banks' halting of transactions with the PA. The liquidation of PA assets and borrowing from banks is delayed. 	<ul style="list-style-type: none"> All aid to the PA is halted
Clearance revenue transfers from Israel	<ul style="list-style-type: none"> PA receives transfers as in 2005 (\$790m). 	<ul style="list-style-type: none"> The GoI suspends the transfer of revenues which it collects on behalf of the PA – a contravention of the 1994 Paris Protocol.⁴ 	<ul style="list-style-type: none"> As in Scenario 2
Insecurity	<ul style="list-style-type: none"> Israeli security measures continue to intensify e.g., search and arrest campaigns, internal closures, incursions, artillery shelling. The firing of homemade rockets from the Gaza Strip to targets inside Israel continues. The threat of suicide attacks continues. 	<p>In addition to the trends mentioned in Scenario 1:</p> <ul style="list-style-type: none"> Violence from unpaid security staff possibly increases Security possibly restricts the ability of international workers and organisations to function Violence is expected to be directed at Israel. 	<p>In addition to the trends mentioned in Scenario 2:</p> <ul style="list-style-type: none"> The PA loses control of security. Privatised security is offered by armed groups.
Trade and labour restrictions	<ul style="list-style-type: none"> Internal closures remain tight and possibly rise Restrictions on access to closed areas (e.g. Jordan Valley, Seam zone, East Jerusalem) continue. The trisection of the West Bank is maintained Permit regime is further tightened Gaza's crossings to Israel are further limited 	<p>In addition to the trends mentioned in Scenario 1:</p> <ul style="list-style-type: none"> Restrictions on workers through Karni and Erez crossings between the Gaza Strip and Israel continue and possibly tighten. Movement from the West Bank to Israel and Jerusalem deteriorates esp. with the Barrier's completion and the continued reduction of worker permits. 	<ul style="list-style-type: none"> As in Scenario 2
Investment in the domestic economy	<ul style="list-style-type: none"> The GDP does not experience the modest growth as in 2005 due to PA's unsustainable fiscal policy (down from 6.3 to 4.9%). Palestinian businesses are unable to market produce due to closures. 	<ul style="list-style-type: none"> GDP falls by 25% Local revenues decline to \$25m / month from \$35m. Entrepreneurs' savings are exhausted and private investors abroad turn away due to the uncertain environment. 	<ul style="list-style-type: none"> The economy slides into a collapse far worse than in Scenario 2.

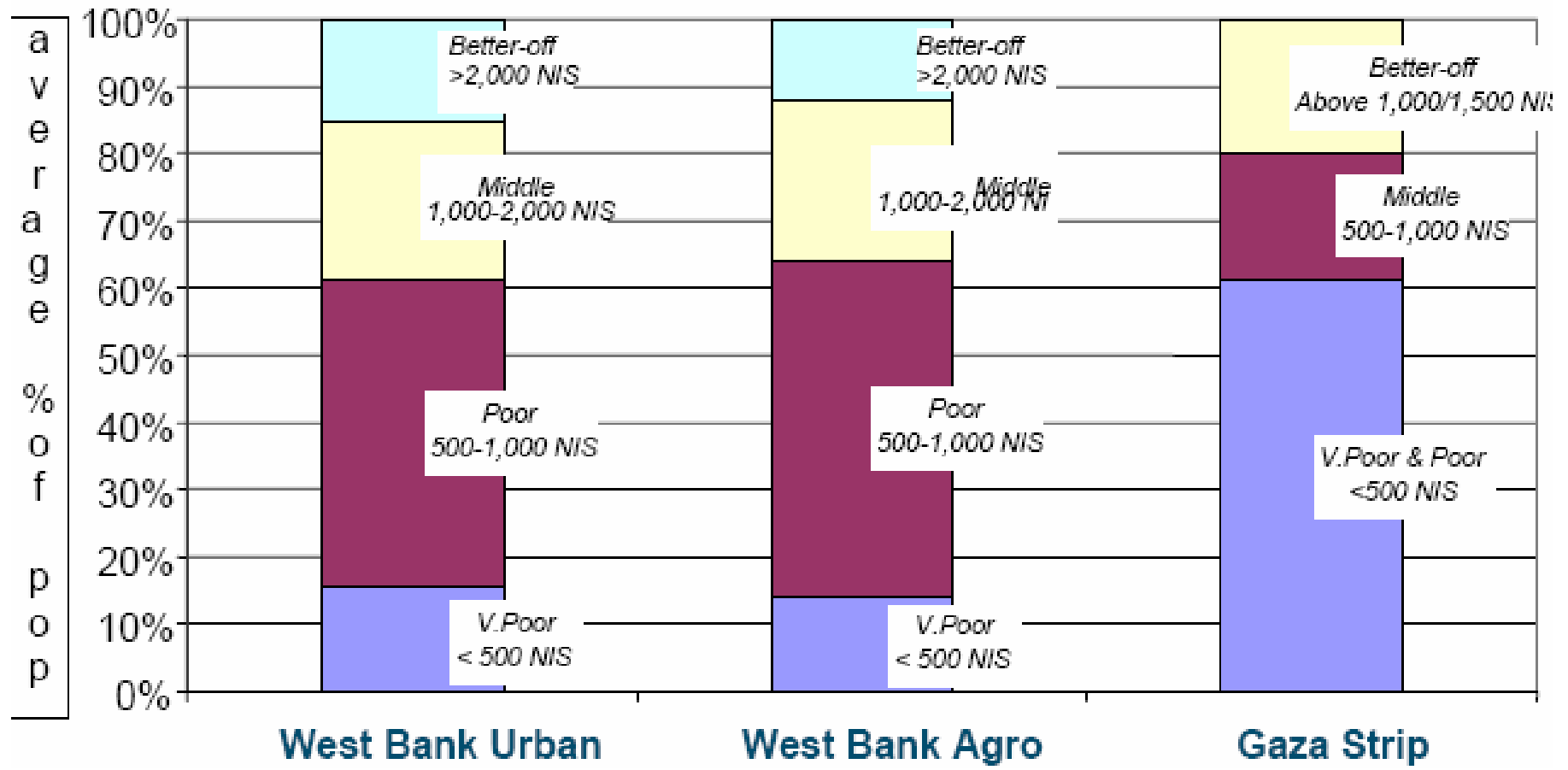
Economic shrinkage as per the World Bank

- Decline in GDP: In 2006, the real Gross Domestic Product (GDP) per capita has declined by 27%, and personal income by 30%
- Unemployment: According to World Bank, unemployment rate in the West Bank around 18.6 percent in 2006, it rose significantly in Gaza, reaching 34.8 percent
- Poverty: According to a report by the WFP, the percentage of the population of Gaza living below the World Bank's poverty line - 2.3 USD per person per day - was estimated at 79%
- Self-Sufficiency: Inability to buy food as a result of loss of employment and lack of access to land or water resources, in a context of degrading socio-economic conditions are the main causes of food insecurity
- Food insecurity: In 2006 WFP & FAO estimated that 34% of 3.9 million Palestinians are food-insecure and another 12% are vulnerable to food insecurity in near future



The depth of poverty currently experienced in Palestine

Wealth analysis: Summary
 Wealth category and monthly cash income
 (1,000 NIS = 232 US Dollars)



Crises in the Palestinian Health Sector

- **Violations against PRCS ambulances**
 - During April 2007, there was an increase in the delay and denial of access incidents for PRCS ambulances at the West Bank checkpoints (39 incidents reported)
- **Difficulties in accessing timely reproductive health care due to closures and checkpoints**
 - 11.5 % of women in a 20,000 household nationwide survey reported delays at checkpoints while trying to reach delivery facilities
- **West Bank drugs banned from East Jerusalem hospitals**
 - A ban by Israel's Ministry of Health (MoH) on medications and supplies manufactured and/or stored in WB from being transported to East Jerusalem hospitals is expected to have a negative impact on patients and medical institutions
- **Health sector strike**
 - The PA health sector remains on strike for the third month in the West Bank



Health Statistics

Pharmaceutical items out of stock (416 drugs and 596 consumables)³¹

Drugs - West Bank	26%	27%	24%	22%	25.7%	24%	19.7%	19.7%	n/a	19.7%	n/a	n/a
Consumables - West Bank	n/a	n/a	n/a	n/a	n/a	n/a	n/a	23%	n/a	n/a	n/a	n/a
Drugs - Gaza Strip	20%	19%	17%	14%	18.9%	21%	16.8%	16.8%	14.7%	17.8%	24%	n/a
Consumables - Gaza Strip (at zero level)	n/a	n/a	n/a	8.7%	9.4%	10.9%	13.6%	n/a	9.7%	25.5%	n/a	n/a
Consumable - Gaza Strip (at less than three months)	n/a	n/a	n/a	33.7%	39.7%	39.4%	17.3%	24.2%	13.4%	23.3%	n/a	n/a

Malnutrition among children 9 - 12 months³²

Underweight - West Bank	3.7%	4.2%	n/a	n/a	n/a	n/a	n/a	n/a	n/a	n/a	n/a	n/a
Anemia - West Bank	51%	49.4%	49.9%	50.6%	45.3%	48.1%	48.1%	44.6%	50.5%	n/a	n/a	n/a
Underweight - Gaza Strip	n/a	4.47%	5.15%	5.64%	4.77%	5.47%	5%	n/a	2.9%	n/a	n/a	n/a
Anemia - Gaza Strip	59.4%	68.9%	67.9%	70.5%	73%	70.6%	66.7%	66.7%	67.8%	67.5%	71.9%	n/a

Crises in the Palestinian Educational System

- Financial Problems: PA schools are experiencing massive financial constraints
- Strikes for Nonpayment: PA teachers continue to not receive a regular salary; Palestinian Teacher Union called for limited teacher strikes across the oPt
- Drop-outs: Suspension of university education is frequently reported, as children of PA employees cannot afford to pay fees
- Erratic Openings: Erratic operation of PA schools results in carelessness of students. Male youth are increasingly engaging in political factions to acquire community status
- Attacks on schools: In March 2007, Israeli military welded shut doors of two kindergartens, affecting 340 children. Israeli military entered Idhna Elementary School for Girls in Hebron firing tear gas causing several cases of suffocation

Educational Statistics

	# of Schools	May 06	Jun 06	Jul 06	Aug 06	Sep 06	Oct 06	Nov 06	Dec 06	Jan 07	Feb 07	Mar 07	Apr 07
Number of schools with at least one day of disruption - West Bank⁵³													
Bethlehem	100	0	-	-	-	100	100	100	n/a	0	0	0	85
Hebron	207	3	-	-	-	207	207	207	n/a	0	72	0	150
South Hebron	159	-	-	-	-	159	159	159	n/a	0	0	0	112
Jenin	113	12	-	-	-	113	113	113	n/a	0	0	0	92
Jericho	20	2	-	-	-	20	20	20	n/a	2 (curfew)	1	0	12
Jerusalem	37	0	-	-	-	37	37	37	n/a	0	0	0	All
Jerusalem suburb	55	n/a	-	-	-	55	55	55	n/a	0	0	0	16
Nablus	196	1	-	-	-	196	196	196	n/a	0	0	2	149
Qabatya	103	n/a	-	-	-	103	103	103	n/a	0	0	0	61
Qalqilia	67	0	-	-	-	67	67	67	n/a	0	0	0	10
Ramallah	159	0	-	-	-	159	159	159	n/a	0	0	2	113
Salfit	57	0	-	-	-	57	57	57	n/a	0	1	0	19
Tubas	-	0	-	-	-	-	-	-	n/a	0	0	n/a	n/a
Tulkarm	107	3	-	-	-	107	107	107	n/a	0	n/a	0	66
Total West Bank	1,380	1.5%	-	-	-	100.0%	100.0%	100.0%	n/a	0.14%	5.4%	-	
Number of schools with at least one day of disruption - Gaza Strip⁵⁴													
Gaza	151	0	-	-	-	151	0	0	n/a	0	n/a	0	80
Gaza North	60	0	-	-	-	60	0	0	n/a	0	n/a	0	44
Khan Younis	64	0	-	-	-	64	0	0	n/a	0	n/a	0	39
Middle Area	37	0	-	-	-	37	0	0	n/a	0	n/a	0	19
Rafah	34	0	-	-	-	34	0	34	n/a	0	n/a	0	29
Total Gaza Strip	346	0.0%	-	-	-	100.0%	0.0%	9.8%	n/a	0.0%	n/a	0.0%	